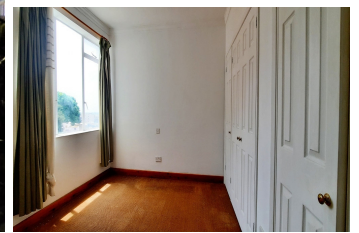




SOLOMON LEVY  
ESTATE AGENTS | EST. 1960



## South District

**£575,000**

WR00223 | APARTMENT

BEDS: 3 | BATHS: 2 | AREA: 110m<sup>2</sup>

### PROPERTY FEATURES

**Service charges:** 20 Per Month

None Pool

**Category 2:** No

**Hepps:** No

**3 Year Residency:** No

### PROPERTY DESCRIPTION

Exclusive agents Reduced! Whether your preference for unwinding at the weekend is a lazy morning coffee on the terrace or sipping a glass of fine wine at sunset or indeed both! take it to the next level with these spectacular views over the bay of Gibraltar. Lovely and spacious 110m<sup>2</sup> three bedroom apartment with arguably some of the best sea views in Gibraltar. Located in a small, quiet building in the South District close to supermarkets and bus routes. The windows and large balcony terrace boast stunning views over the bay of Gibraltar. Features include fitted wardrobes in the bedrooms and reverse air conditioning in livingroom and master bedroom. Whilst the property requires updating throughout, there is potential to easily convert it to a four bedroom apartment without adjusting the current layout, adding significant value to the property. Ample zoned parking immediately outside the building. Must be seen to be fully appreciated. Located in a self-managed building with low monthly overheads. For more information or to schedule a viewing, please contact our office on +350 20077789 or via email to [sales@slea.gi](mailto:sales@slea.gi)

📍 28 City Mill Lane, Gibraltar GX11 1AA

☎ (+350) 200 77789 ✉ [info@slea.gi](mailto:info@slea.gi)

© 2026 Solomon Levy CMS. All Rights Reserved.